

# MONTHLY MEMBERSHIP PROGRESS REPORT

LOCATION INDIA

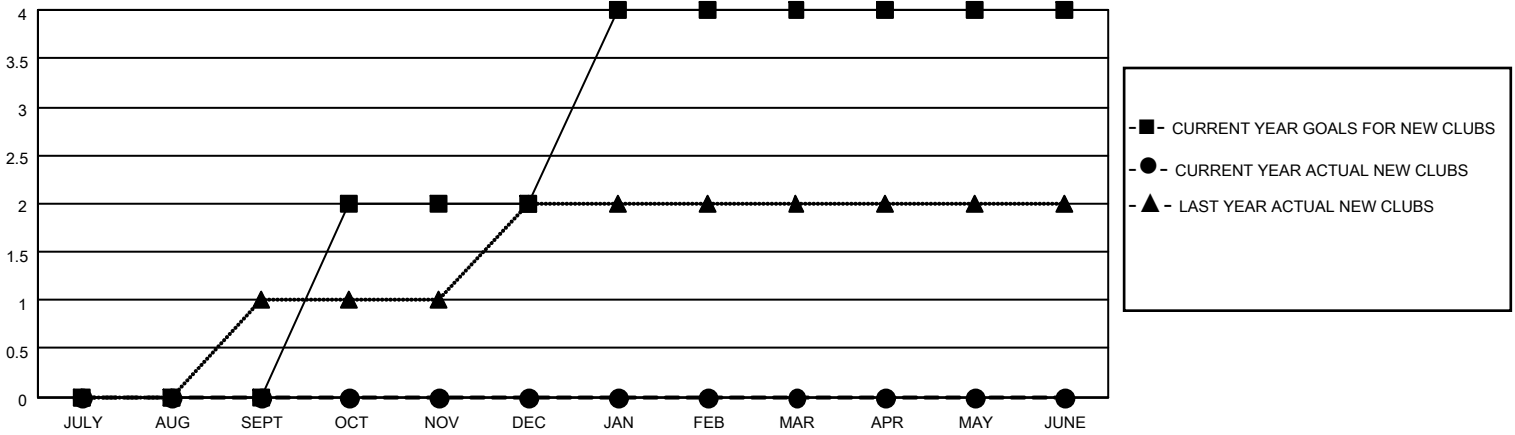
District 317 D

Results as of: 8/31/2020

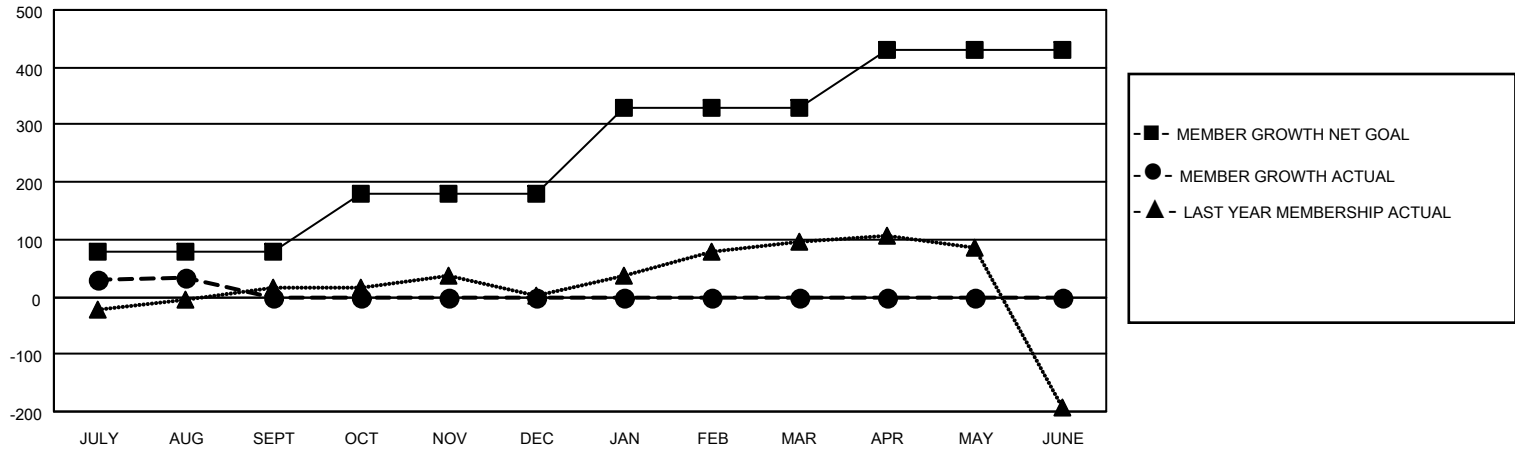
Clubs			
RESULTS FOR 2020-2021			
QUARTER	NEW CLUB GOAL	NEW CLUBS	DROPPED CLUBS
JULY/AUG/SEPT	0	0	0
OCT/NOV/DEC	2	0	0
JAN/FEB/MAR	2	0	0
APR/MAY/JUNE	0	0	0

Members			
RESULTS FOR 2020-2021			
QUARTER	MEMBER GROWTH NET GOAL	MEMBER GROWTH ACTUAL	DROPPED MEMBERS ACTUAL (including transfers)
JULY/AUG/SEPT	80	77	39
OCT/NOV/DEC	100	0	0
JAN/FEB/MAR	150	0	0
APR/MAY/JUNE	100	0	0

**GOALS AND ACTUAL NEW CLUBS CUMULATIVE**



**GOALS AND ACTUAL MEMBERS CUMULATIVE**



DROPPED CLUBS: 0	19 CLUBS OF 98 ADDED 1 OR MORE NEW MEMBERS	<u>GENDER DISTRIBUTION</u> MALE 2,924 (77.60%) FEMALE 844 (22.40%)
<u>DROPPED MEMBERS</u>	<a href="#">CLICK HERE FOR CUMULATIVE MEMBERSHIP DATA</a>	TOTAL FAMILY UNIT MEMBERS 1,315 FAMILY MEMBERS PAYING HALF DUES 672
DECEASED 3 CLUB CANCELLED 0 OTHER 36 <hr/> TOTAL 39		